

# VERY CHERRY



Private clients in Midlothian approached us to design and make a Victorian period kitchen as the focus of a substantial domestic redevelopment. The cabinets, furniture and doorway were proportioned individually in relationship to each elevation.

Cherrywood, teak and granite materials combine to give a warm atmosphere and comfortable setting for the modern furniture and fittings that were subsequently installed. The project characterises the company's speciality in period detailing.



## Charles Taylor Woodwork

*exceptional design and quality by master craftsmen*



Charles Taylor Woodwork & Design Ltd. West Church, Old Edinburgh Road, Dalkeith EH22 1JD

Tel: 0131 654 2221 Fax: 0131 654 2884

Email: [charles@ctww.co.uk](mailto:charles@ctww.co.uk) Web: [www.ctww.co.uk](http://www.ctww.co.uk)



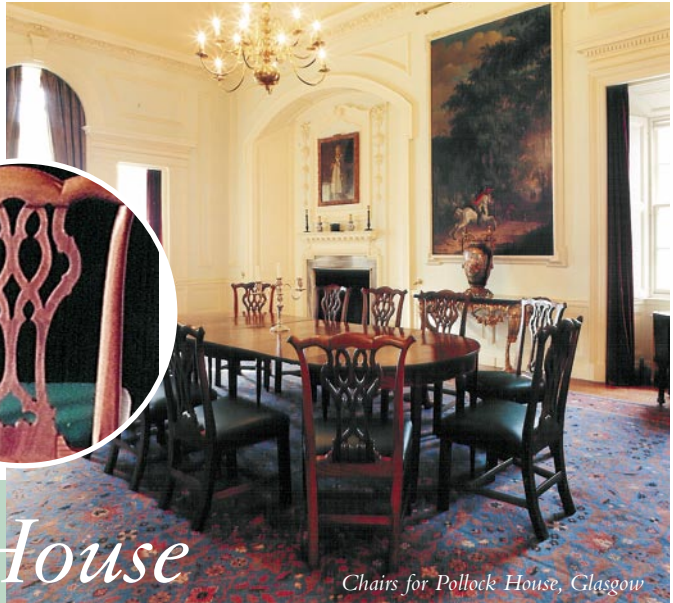
# Charles Taylor Woodwork

*exceptional design and quality by master craftsmen*

news november 2002

issue 1

**Welcome.** This is the first issue of our tri-annual newsletter, this will be a regular up-date for our customers on some of the exciting projects we have been working on.



*Chairs for Pollock House, Glasgow*

## Pollock House

Over the last few years Charles Taylor Woodwork has completed many diverse and challenging commissions for The National Trust for Scotland. Still, we were very flattered when they approached us to produce a set of fourteen Chippendale dining chairs to replicate exactly the original set, purchased by the Maxwell family in the 18<sup>th</sup> Century but no longer at Pollock House.

The chairs were constructed traditionally

from walnut, hand carved, polished and upholstered with Bridge of Weir leather on horse hair.

Ian Gow, Curator of The National Trust for Scotland, said

*Nothing in my brief time as Curator of The National Trust for Scotland has given me more pleasure than producing these handsome chairs for Pollock and to know they will grow more beautiful with the patina of use.*

*One is always nervous of replicas because of an inevitable deadness but the careful selection of walnut timber and meticulous craftsmanship renders them full of life.*



*Early next year, we will be launching our new web site complete with online gallery.*

## One Smart Boardroom



Smarts Advertising needed a revamp of their boardroom in Leith, requiring an upgrading of a dated table and the replacement of boardroom cabinets, previously made by us in 1997. The modular table was improved

by applying beech veneers with stainless steel edging. We designed, manufactured and installed new curving cabinets in beech, with stainless steel detailing. All interrelating with the stainless steel wall panelling, media and lighting effects.



## Making an Entrance



**Stobo Castle Health Spa** commissioned a new reception desk, designed by RD Cameron Associates and specified and built by us in American Cherry, featuring curved glass panels with integral commissioned art work depicting the history of Stobo Castle.



## Marking Time in Style

**Scottish Power** asked us to design and build a prominent office feature which would delineate the office entrance and convey the relationship between time and the delivery of power.

The result is a dramatic curving polished ash screen with a 1.5 metre

working stainless steel pendulum, combined with a linear clock created from forty eight glass shards of varied length, individually back lit with LEDs, marking the half hour by progression.



### Current Projects at Charles Taylor Woodwork

**Oak and Sycamore staircase at the Queens Gallery, Holyrood, Edinburgh**  
for The Royal Collections Trust

**Kitchen, library furniture**  
for private client, Hermitage, Edinburgh

**Display Cabinets for the Hew Lorimer exhibition at Kellie Castle, Fife**  
for The National Trust for Scotland

**Oak and polished Caithness stone dining table** for private client, Jersey

**Walnut, oak and elm furniture, fitted maple and elm furniture**  
for private client, Cluny, Edinburgh

**Exhibition Stands for "Weaving the Unicorn" at Stirling Castle**  
for Historic Scotland

**Kitchen, oak furniture and fitted furniture** for private client, Athelstaneford, East Lothian